

A black industrial pin stamping machine with a vertical column and a horizontal arm. The arm holds a stamping head with a pin. A label on the side of the machine reads 'TMP1700 THE ORIGINAL PINSTAMP®'.

TMP1700

THE ORIGINAL PINSTAMP®

TELESIS

THE COMPLETE MARKING PACKAGE

THE ORIGINAL
PINSTAMP
TMP1700

THE PROVEN INDUSTRIAL
DOT PEEN WORKHORSE



VISION TECHNOLOGY FOR
PINSTAMP® MARKERS



INTUITIVE TOUCHSCREEN
PINSTAMP® CONTROLLER

TELESIS

TELESIS

**TMC
520**
PINSTAMP
CONTROLLER

TELESIS

THE ORIGINAL PINSTAMP[®] TMP1700



THE PROVEN INDUSTRIAL DOT PEEN WORKHORSE

Rugged and **low-maintenance**

Compact and contaminant-resistant

Marks a wide range of materials
from soft plastics to hardened steel

Interchangeable marking pin sizes
for various depth requirements

Proprietary floating pin technology
easily **accommodates surface
irregularities and does not require
springs**

Quick-clip cartridge for ease of use

VISION TECHNOLOGY FOR PINSTAMP[®] MARKERS

**Save time and increase
productivity** during pattern
design with camera-assisted mark
positioning system

View the part and **precisely fix
mark position on-screen**

**Higher degree of mark
positioning** precision—especially
with smaller parts

Eliminate trial-and-error
positioning by putting “eyes on it”

INTUITIVE TOUCHSCREEN PINSTAMP[®] CONTROLLER

Simple, **intuitive interface** with easy-
to-use **tools for arc text, graphics,
and data matrix** allows you to create a
mark in under a minute

Contaminant-resistant design and
flexible installation

**Impact-resistant
construction** that withstands
harsh industrial environments

No fan required, external power

Scan-in patterns with USB scanner
for quick variable text insertion

EIP Connectivity available





TMP1700 Features

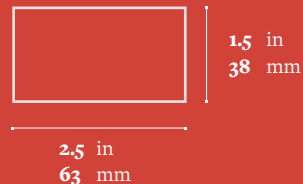
Marking speeds up to five characters per second

Automatically generates serial numbers, time, date, and shift codes

Store hundreds of marking patterns

Easily interfaced to PLCs and host computers

Marking Window



Marking Specifications

Max Depth	0.003 in 0.76 mm
Max Height	1.5 in 38.1 mm

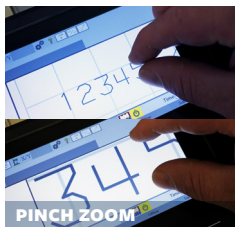
Options and Accessories

Rotary fixtures for marking cylindrical parts

Marking head mounting post, programmable Z-axis

Panel-mount and IP/NEMA rated controllers

Easy and free software upgrades

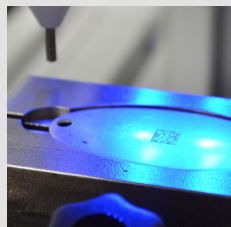


PINCH ZOOM



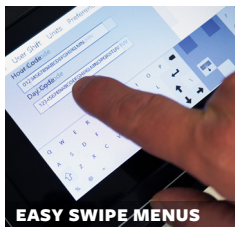
PHOTOGRAPHIC ASSISTANCE

View the object to be marked and **precisely fix mark position with on-screen controls**

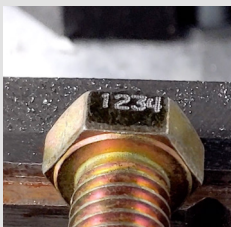


INCREASE THROUGHPUT

Simplify applications that involve multiple parts or a variety of parts while immediately verifying and validating data matrix 2D codes



EASY SWIPE MENUS



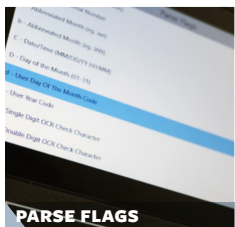
DETAILED MARKING

Achieve a higher degree of mark positioning precision—especially when marking smaller parts

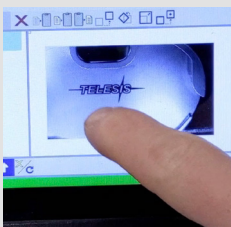


GREATER CONSISTENCY

Meet the quality requirements of rigorously demanding clients by **eliminating operator-dependent variabilities**

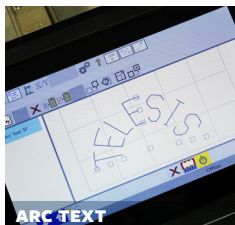


PARSE FLAGS

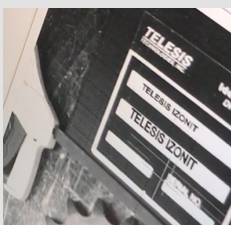


SPEED THE PROCESS

Eliminate trial-and-error / jog-and-view positioning processes by putting “eyes on it”



ARC TEXT



REVOLUTIONARY PRECISION

Save time and increase productivity during pattern design with camera-assisted mark positioning system

TELESIS

VIRTUAL DEMOS AVAILABLE

SCHEDULE A DEMO

OR REQUEST A QUOTE

sales@telesistech.com

800.654.5696

telesis.com

WORLDWIDE SALES & SERVICE