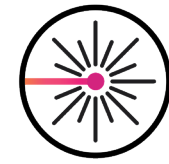


ONLY AT TELESIS

PATENTED  
**DUAL-HEAD**  
TECHNOLOGY

**TWO 200-WATT MARKING HEADS.**  
**400 WATTS OF DEEP-MARKING POWER.**  
**SYNCHRONOUS OPERATION.**

APEX.200W—a matchless combination of power and performance innovation, exclusively from Telesis. Telesis' patented dual-head technology doubles throughput and lowers costs. Other laser marking manufacturers can't come close.



**FREE SAMPLE MARK**

Send us your part and we will  
**ensure APEX is the best solution for you**  
before you buy



**TALK WITH AN EXPERT**

Ask questions and **get answers from our team**  
of permanent marking experts



**WORLDWIDE SUPPORT**

**Telesis direct sales and distribution is global.**  
Where ever you are, we will meet you there.

**telesis.com**  
**sales@telesistech.com**  
**800-654-5696**



**APEX.200<sup>W</sup>**  
Laser Marking System by **TELESIS**®

**POWERFUL**

The most capable marker in the industry

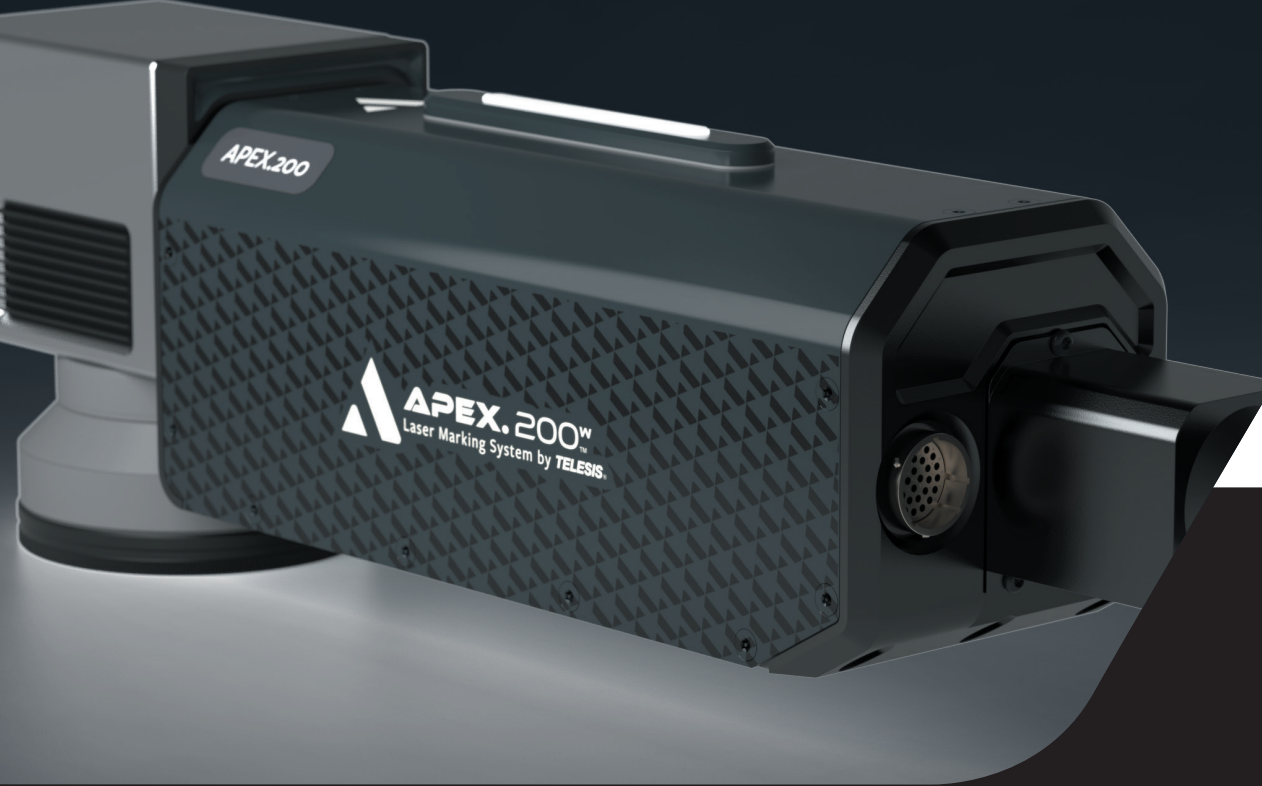
**STRONG**

Built with high quality components for  
heavy duty and rough environments

**RIGOROUS**

Conquers challenging specs for  
depth, speed, and mark quality

**TELESIS**

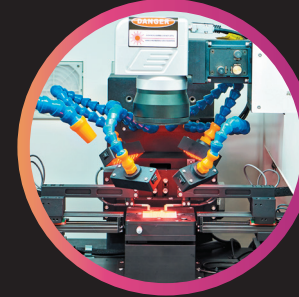


# UNLIMITED APPLICATIONS



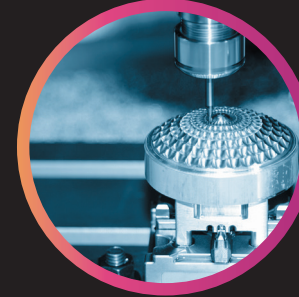
## POST-PROCESS

APEX.200's deep marking capability means graphics, human-readable text, and data matrix codes can still be utilized even after the products are painted or finished.



## ROBOTIC INTEGRATION

All Telesis lasers can be integrated into production facilities—APEX.200 is designed with the future in mind. Ensure your facility is operating at peak performance with our in-house integration team.

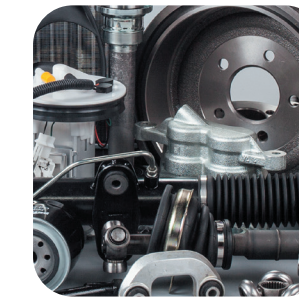


## MICRO-MACHINING

APEX.200 is designed to the latest manufacturing standards, guaranteeing precise machining control in virtually any material and precision manufacturing of complex geometries of delicate components.

# FOR YOUR INDUSTRY

The APEX.200 Watt Laser Marking System by Telesis is **designed to meet the most demanding requirements** in your industry.



## AUTOMOTIVE

Telesis helps manufacturers meet strict export guidelines while allowing teams to keep pace with changing material demands. APEX reduces rejection of exported vehicles and virtually eliminates marking errors.



## HEAVY EQUIPMENT

Construction and heavy equipment manufacturers rely on Telesis equipment to apply deep serial numbers, graphics, and more that withstand the elements, post-process design, and unique challenges of the industry.



## MUNITIONS

Ensure the safety and integrity of your products by integrating APEX.200 into your production. Add graphic elements, extra deep serial numbers, and safety elements to your product design.

PERFECTED BY TELESIS

# ULTRA DEEP MARKING

True innovation in permanent marking has arrived: achieve deep marks with APEX.200™

- Produce **higher quality** marks than pin-based alternatives
- **Improve consistency** in your operations
- Achieve necessary **depth in heavy, dense materials**
- **Eliminate consumables** and reduce recurring costs
- **Easily integrate** APEX into production lines
- **Reduce energy** consumption
- **Increase throughput** of product
- Quickly **realize ROI**

## FAST ENGRAVING

Time to mark a 10-Digit Text Line, 7mm tall, 0.3mm deep in aluminum

